

www.KorCham.net



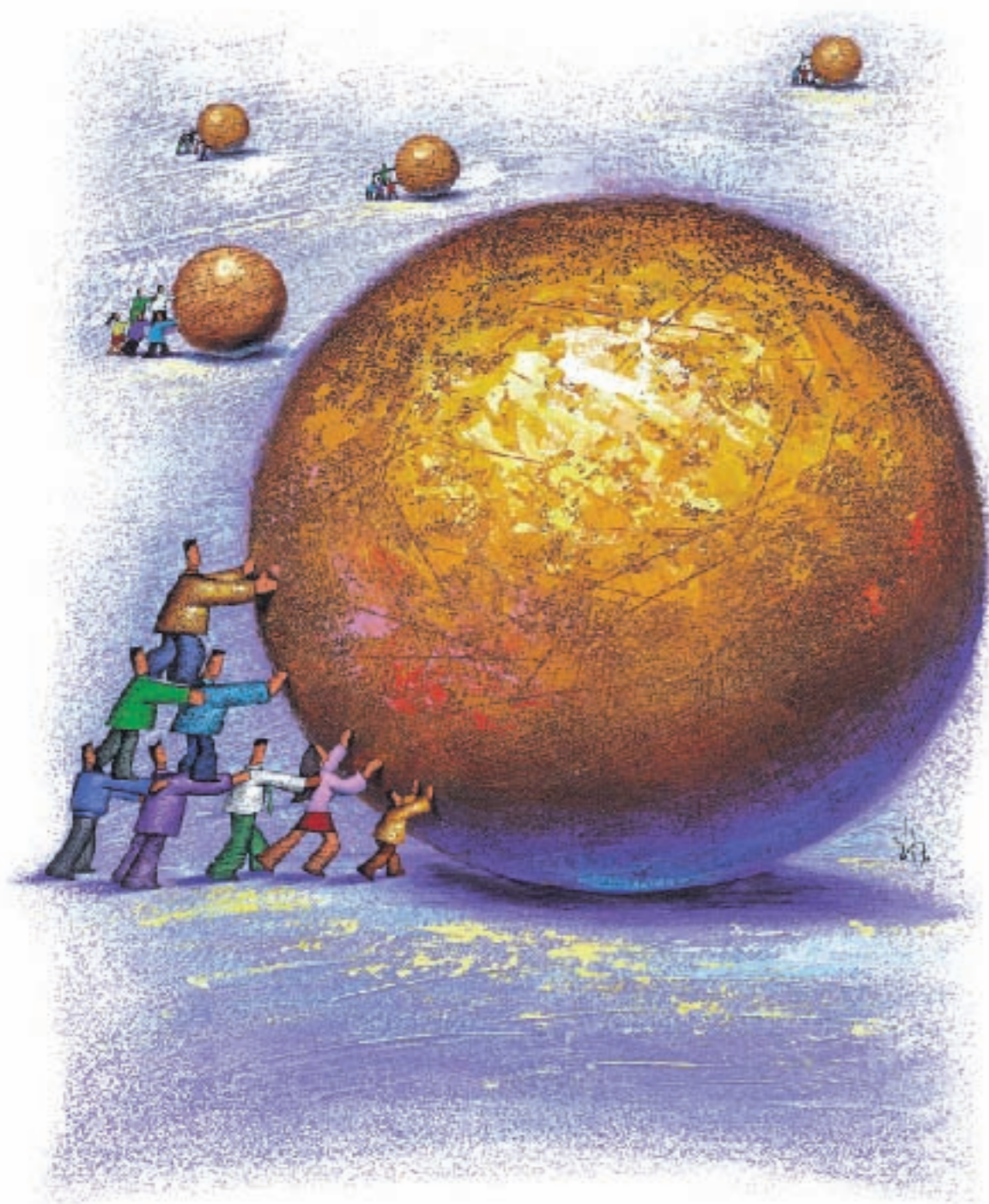
For Your
Business Success

KCCI

The Korea Chamber of Commerce and Industry



45 Namdaemunno 4-ga, Jung-gu
Seoul 100-743, Korea
TEL 02-6050-3542-45



**Reach us.
Find out.
Expand beyond.**

Korea is an attractive market for investors. Fast emerging as a new global hub, Korea is a land of opportunities that continuously evolves to meet dynamic changes. Reach us. We can work for your business success here. Our networking opportunities and support systems are just some of the ways we can help you accomplish this.



It is my great pleasure to welcome you on behalf of the Korean business community.

The Korea Chamber of Commerce and Industry (KCCI) is the largest and most influential business federation in Korea, representing more than 45,000 businesses of all sizes, sectors and regions. It includes 71 local chambers, relevant associations, institutes, and Korean chambers all over the world. Not only does it participate in the government's policy-making process to voice business interests but also in social activities as well, to create a social environment where companies are well-regarded and respected.

Now in the 21st century, nations move toward embracing open market economies, transcending both national and ideological borders. Countries are reaching beyond their national boundaries, with the true driving force coming from companies. Korea has been taking a proactive approach to becoming a business hub in Northeast Asia, one of the major growth pillars of the world economy, since the opening of its markets.

KCCI also made the right transition. We expanded membership eligibility to include foreign investors before any other economic organizations did in Korea, for we believe in the sound growth of the Korean economy where local and foreign companies can gain from constant competition and friendly cooperation.

The Korean markets and KCCI can offer you an unprecedented array of new opportunities. Your success here will be a success for all of us.

We wish you to succeed and realize your dreams in Korea.



Sohn Kyung-Shik
Chairman



KCCI Did you know?

FIND OUT 1 REPRESENTATION

With the longest standing history, KCCI is the true voice of businesses with its authority to represent these in Korea. KCCI is democratically accountable to a solid membership base of over 45,000 under 71 local chambers, and engages members in various activities with its affiliates. Programs and services are offered by institutes including the SME Support Office, The Human Resources Development Office (HRD Office), GS1 Korea, and Business Institute for Sustainable Development.

FIND OUT 2 MEMBERSHIP

KCCI is fully open to foreign nationals planning or doing business in Korea. We assist our foreign members receive equal treatment and sometimes preferential treatment, and designs tailored programs for foreigners. We can help you locate business partners in Korea, and provide support for your business to thrive.

HISTORY

KCCI was established under the Chamber of Commerce Act, to promote business interests and contribute to national and social development.

KCCI's history can be traced back to the establishment of the Hansong (i.e. Seoul) Chamber of Commerce in 1884. For the 120 years since, KCCI has been an influential voice of private businesses and fostered a business-friendly environment in Korea. KCCI is the leading business federation in Korea that is recognized for its contribution to the growth of the national economy and local businesses. Today, KCCI represents Korea at the International Chamber of Commerce (ICC) and other international business organizations. KCCI is proud to be part of a close network of national chambers and economic organizations.



FIND OUT 3 GOVERNMENT'S POLICYMAKING PROCESS

Among the economic organizations in Korea, KCCI holds the highest reputation when it comes to policy proposals and media campaigns. KCCI gets involved in policymaking on issues of environment, labor and trade. In the process, KCCI successfully brings attention to business issues and protects corporate interests. Equal attention is given to providing positive directions for national development.

FIND OUT 4 MANAGEMENT SUPPORT SYSTEM

KCCI has a full support system to improve business conditions for local companies and foreign investors alike. Services range from comprehensive support to resolve business issues and assist small businesses to management counseling, corporate & product information, new transaction posting, recruiting plan, technical skills training, national accreditation, research & survey and media campaign. Our services are known for offering practical and much needed support to our member companies.

FIND OUT 5 MEMBERSHIP TYPES

KCCI is a legally constituted economic organization and membership is obligatory for companies with a half-year revenue exceeding 10 billion KRW (approx. US \$ 10 million). The Chamber of Commerce Act obligates paid membership status for both domestic companies and foreign investors under this category. Voluntary membership requires application and is open to companies with less than 10 billion KRW in revenue, while special membership* is offered to non-profit organizations.

| Admission for Voluntary Membership |

- Admission Procedure: Corporation / Individual → Chamber (Application Documents) / Chamber → (Approval & Notification)
- Application Documents: Application Form, A Copy of Business Registration Certificate
- Membership Fee: Half-year Fee 250,000 KRW (Annual Fee 500,000 KRW)
- Reference: Membership Team TEL 02-6050-3872-80 FAX 02-6050-3428

DATA

We have an extensive data archive with many options available for our members. For more detailed information on our activities, please contact the International Business Research Team. Also, official data published by KCCI can be sent upon request.

* Special membership : non-profit organizations and associations related to commerce and industry.

Membership Service

We are undertaking various activities, from representing businesses externally to servicing membership internally. Our services are open to member companies, domestic or foreign, and we can bring information and services to our members in every industry sector. We offer customized services to suit every member's need. For our membership we raise business issues and offer counseling, arrange trade meetings or provide HR support. We also assist member companies turning to informatization or globalization.



KCCI OMBUDSMAN SERVICE CENTER

1600-1572

The center takes initiatives to eliminate whatever stands as barriers to businesses, including government regulations, policy restraints, tax & accounting, labor & HR, legal affairs, business management and trade issues. The Center has approximately 100 professional consultants and utilizes our local chamber network, to provide fast-track services all the way from application to closing. Also, the Center provides call-back services to minimize inconveniences for companies with inquiries.

BUSINESS NETWORK

Strong Networking



You would be the best to know about the value human networking has for your business. In particular, Korea is known to be a country that values person-centered relationships because of its unique cultural background and sentiment. We can meet your networking needs, backed up with our superb network of membership CEOs, government officials, professional experts and successful business leaders from home and abroad. We can provide extensive knowledge and human networking for your business success. With our network system of long-standing history, closely knitted with first-hand experience and know-how, we will be a your reliable partner for your success.

Membership Service Team | 02-6050-3422-5

CEO ROUNDTABLE

The most popular service offered by KCCI, CEO Roundtable sessions featuring timely discussions to meet the needs of member companies. KCCI invites renowned speakers with professional expertise and holds the meetings from an excellent facility in a convenient location. The Roundtable is held on an average of 30 times per year, and is the most inspirational event hosted by KCCI. By delivering current government policies and management information, the CEO Roundtable helps participating CEOs raise management capabilities, socialize with peers and exchange information. It is an excellent and worthwhile time investment for CEOs who want to explore new business opportunities.

Exclusive Membership Service | Excerpts of speeches & materials (by e-mail request) and audio & video clips in CD format.

CEO SUMMER FORUM

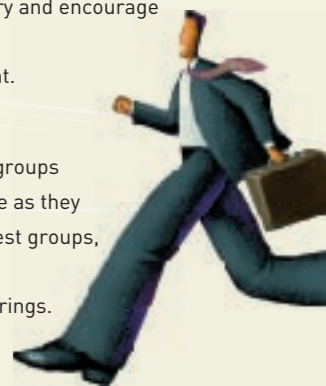
Proudly presented for the last 30 years, this program helps CEOs revisit their business strategies and cope with rapid changes in the business environment. Renowned speakers from different fields provide in-depth knowledge and information to the audience. Participants also enjoy socializing with peer CEO groups to strengthen their human networks, and refresh themselves by attending cultural programs.

NEW YEAR'S GREETING / COMMERCE & INDUSTRY DAY

Every year, we host a New Year's Party where three branch chiefs, VIPs, diplomatic corps members and business leaders come together to greet the new year. We also celebrate Commerce and Industry Day to promote Korea's commerce and industry and encourage entrepreneurship among business professionals. Rewards are presented to the year's biggest contributors to the nation's development.

CEO INTEREST GROUPS

Senior members take the initiative to organize and lead small interest groups at our local chambers. Participants express satisfaction and acceptance as they become part of a true human network at our regional and special interest groups, thru social events as well as leisure & hobby activities, including golf. CEOs also enjoy business counseling between members at these gatherings.





GLOBAL BUSINESS

For a Bigger Success

Whether it be exploring an overseas market or solidifying one's base in a local market, we can assist you.

We work to improve the global competitiveness of our member companies.

With our world network of national chambers, overseas Korean chambers and foreign chambers in Korea, you are one step closer to achieving greater success.

INTERNATIONAL COOPERATION AND INTERNATIONAL TRADE REGIME

International Business Research Team | 02-6050-3542-5

We spearhead international efforts to promote trade rules in Korea, including ICC rules on UCP and INCOTERMS. Also, representing Korea's private sector, we actively engage in efforts to resolve trade issues and promote international cooperation. Moreover, our International Business Research Team assists companies with less experience, by providing counseling on all stages of trade, from negotiating a contract to making/receiving payments. We are also an active member of CACCI, an organization of 24 chambers from the Asia-pacific region. Through these efforts, we promote intra-region trade, technology transfers, small businesses, human exchange and economic cooperation. Furthermore, we represent Korea's private sector to promote trade liberalization including Korea-US FTA, and embrace a new order in international trade, including opening new markets.

International Cooperation Team | 02-6050-3553-6

When it comes to trade missions, we are resourceful at both ends. We dispatch and receive trade missions to and from abroad. At our trade meetings, overseas companies are invited to one-on-one consultations with our members. We host trade meetings both for Korean SMEs seeking overseas market opportunities and foreign investors in Korea looking for trade with Korea's neighboring countries.

We actively promote products and services offered by its member companies, at the courtesy calls and on-site tours attended by political and business leaders. Moreover, we provide a road map for globalization to our member companies.

GLOBAL BUSINESS MARKETING

International Business Research Team | 02-6050-3542-5

Using the research and analysis outcome of top-class experts in trade and marketing, we provide assistance to our member companies seeking overseas opportunities and trade. The level of our extensive knowledge matches up to the level of data coming from major economic research institutes. Reports include: new industrial technology trends; market updates; national trade regulations; national FTA arrangements under the WTO regime, subsequent changes to the trade environment and countermeasures.

CHINA BUSINESS COUNSELING CENTER

<http://china.korcham.net>

China Team | 02-6050-3559-61

We currently operate the only private cooperation channel recognized by the governments of Korea and China, called The Korean-Chinese Economic Council (KCEC). Moreover, in close connection with the Korean chambers in 36 cities in China, we provide counseling service to our member companies that either entered or plan to enter the Chinese market. Counseling areas include the investment climate and management conditions, and we have a full support system ranging from free consulting on trade advice, arbitration, tax & financing, labor and IPR, to professional services including company start-up.

Same services are also provided to foreign investors that wish to enter China with a business base in Korea.



INTERNATIONAL SCHOOL

Korea Foreign School's Foundation | 02-6050-3952-3

We have a special school for expatriate families. Set up by Korea Foreign Schools Foundation, Yongsan International School of Seoul offers an international standard of education for K1-12 students with top-class faculty members and curriculum. The Foundation is chaired by the Chairman of the Seoul Chamber (SCCI).

The campus facility of YISS is second to none in Korea. The beautiful campus has excellent classrooms, special rooms for music and IT, gymnasium, an indoor swimming pool and library. Located in the center of Seoul, YISS provides top class environment in accessibility and surroundings.





EDUCATION & KNOWLEDGE

The Competitiveness You Need

A country of old traditions and new technologies, Korea is transforming fast into a knowledge-based information society with advanced IT technology. To achieve business success in Korea, one has to understand and adapt to the local culture and social trends. We offer excellent education contents and a specialized system for the self development of executives and employees at our member companies. Quality services of coaching and training will help you boost your competitiveness.

BUSINESS TRAINING

- 1 Membership Service Team | 02-6050-3422~5
- 1 SME Support Office | 02-6050-3466~70

We provide a core training program for back office staff. Courses include taxation, accounting, labor and environment management, and offer case studies from first-hand experience of businesses. Lecturers come from the pool of leading authoritative experts in their respective areas. We offer a differentiated contents and training system, aiming at full customer satisfaction.

BASIC JOB SKILL EVALUATION (<http://license.korcham.net>)

- 1 Vocational Qualification Planning Team | 02-6717-3622~4

To improve office skills, we operate a Vocational Qualification Center to administer testing of state-level certificates such as Excel, PowerPoint, E-commerce and AIS (Accounting Information System). The Center also administers the testing of Foreign Language Examination (FLEX) in English, Chinese and Russian to screen for talents with global competitiveness and linguistic fluency, and (Traditional) Chinese Character Competence Certification to check basic job skills.

ETHICS MANAGEMENT / ECONOMIC EDUCATION

- 1 Corporate Social Responsibility Team | 02-6050-3452~3

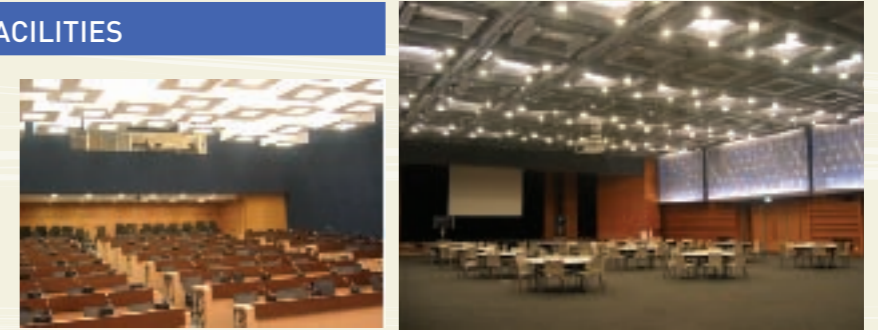
In support of businesses' drive to improve transparency via ethical management, we have published and distributed a guideline, arranged regional lectures and commissioned a research project on Korea's response to the Ethics Round. Furthermore, we are actively engaged in economic and business education, to improve pro-business sentiment among teenagers and the general public.



INTERNATIONAL CONFERENCE FACILITIES

- 1 General Affairs Team | 02-6050-3635

We have state-of-the-art international conference facilities, fully equipped with simultaneous interpretation booths and an excellent audio system, as well as parking space to accommodate 600 vehicles. Member companies are invited to use the main conference hall and seminar rooms at an affordable cost.



· International Conference Hall, Assembly Hall, 2 Mid-sized and 5 Small Seminar Rooms

RESEARCH & ANALYSIS

- 1 Economic Research Team | 02-6050-3443~6
- 1 Corporate Policy Team | 02-6050-3462~3
- 1 Industrial Research Team | 02-6050-3472~6
- 1 Labor & HR Team | 02-6050-3482~4

To foster a business-friendly environment, we engage in extensive research, analysis and policy proposals. Our teams are assigned to research & analyze markets, technologies and business trends. The output is made into a comprehensive knowledge and information base for the use of our member companies, to create their management strategies and marketing plans.

| | |
|----------------------------|---|
| · Economic Research Team | Economic policy, finance, taxation and Inter-Korean economic cooperation. |
| · Corporate Policy Team | Corporate governance, litigation and fair trade issues. |
| · Industrial Research Team | Industrial cycle & trends, environment and logistics & distribution. |
| · Labor & HR Team | Labor relations, industrial workforce, employment policy and academia business cooperation (ABC). |

SUSTAINABLE MANAGEMENT (www.bisd.or.kr)

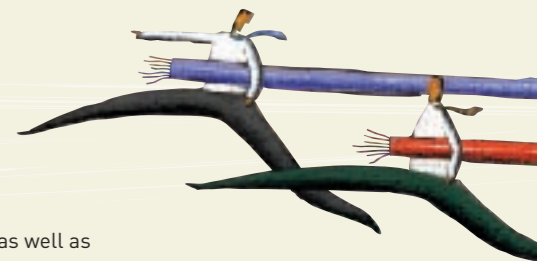
- 1 Business Institute for Sustainable Management | 02-6050-3801~2

Sustainable management is becoming the topic of corporate management in the 21st century. The Business Institute for Sustainable Management provides our members with various analytical tools, frameworks and guidelines for the formulation of the right strategy. The Institute analyzes to update new information and trends in Korea and abroad, to provide real-time services to its subscribing members.

LOGISTICS & DISTRIBUTION (www.gs1.kr.org)

- 1 Global Standard One Korea (GS1 Korea) | 02-6050-1400

Being our innovation center for logistics & distribution, GS1 Korea is working on special projects to build a knowledge base and a global standard for a logistics infrastructure. To facilitate logistics and distribution industries, GS1 Korea also engages in research, analysis and staff training as well as information infrastructure projects using POS technology. GS1 Korea also operates a Korea-specific test lab for RFID, to expand the use of its technology. Furthermore, GS1 Korea is engaged in infrastructure projects to expand the use of the EPC Global Network, so as to secure the RFID/EPC standard, develop technology and promote related industries.





HUMAN RESOURCES

Human Resource Management

For member companies in need of a quality workforce, we provide differentiated training courses. Also, we try to locate high-caliber talents for the private sector by selecting Alternative Military Service Companies on the government's behalf.

INDUSTRIAL WORKFORCE (<http://kccihrd.korcham.net>)

HRD Office | 02-6050-3572~4

From our 8 training institutes, we offer 77 different courses to train technicians. And we recommend course graduates to our member companies when there is a job opening. We screen our candidates carefully and train them thru our differentiated courses, to produce only the best quality workforce. Our institutes enjoy an excellent reputation, proven by the 10-year track record of a 100% job placement rate and the best scores received from customer satisfaction surveys by employers.

DESIGNATION OF ALTERNATIVE MILITARY SERVICE COMPANIES

Membership Service Team | 02-6050-3422~5

The Korean government operates a system for qualified young professionals who are willing to work in designated companies as alternative military service. We were delegated by the government to select SMEs under this system, to help alleviate the shortage of manpower. With approximately 2,500 applications received from 71 local chambers every year, KCCI follows a fair and strict evaluation procedure for the selection of Alternative Military Service Companies.

HIGH-GROWTH-POTENTIAL SMES

Membership Service Team | 02-6050-3422~5

We seek to promote high-growth-potential SMEs from different sectors, by identifying and recommending them as candidates for the government's special award. Selected companies enjoy better opportunities to recruit a talented workforce, apply for government-assisted projects and boost the recognition level to enhance corporate value.



BUSINESS INFORMATIZATION

Best Contents, Best Service

We currently operate KorChamBiz, which makes us by far the largest provider of business information in Korea. All the essential information on corporate info, product details, financial analysis, business transactions and recruitment plans can be found at the click of a mouse. Furthermore, Bizinfo Service provides core support functions needed for informatization, by facilitating e-commerce, promoting use of SCM, and handling IT-related inquiries.

ON-LINE BUSINESS INFORMATION www.korchambiz.net

Bizinfo Service Team | 02-6050-3722~4

KorChamBiz gives you full access to the business database you need. Korea's best-acclaimed business portal includes 210,000 postings on local businesses, 1.2 million on overseas businesses and 1.6 million on product information respectively. Quality knowledge information can be secured thru KorChamBiz.



SCM SUPPORT SERVICE (<http://scm.korcham.net>)

IT Call Center | 1600-1747

To promote widespread use of SCM, the exemplary case for IT-led business innovation, Ministry of Commerce, Industry and Energy (MOCIE) and Ministry of Information and Communication (MOIC) jointly developed SCM setup models by sector and function. We are delivering these models to our membership. In particular, our SCM support service is recognized as the best online SCM service in Korea, and provides users with guidelines for introduction, professional on-line courses, a Q&A bulletin board, success stories and academic data. With our systematic approach and detailed contents, you can be assured of a successful SCM introduction in your company.

CORPORATE IT ENQUIRIES (www.it114.or.kr)

IT Call Center | 1600-1747

To assist SME efforts to go digital, we operate training programs and seminars to working-level staff geared towards early introduction of informatization projects. In particular, our IT Call Center provides troubleshooting services, and offers remote assistance to clear system errors. Services are offered at no additional cost to our membership.

BS DATABASE SERVICE (www.korchambiz.net)

Bizinfo Service Team | 02-6050-3722~4

As the operator of the only BS Industry network in Korea, we too provide financial and service information of some 25,000 companies from 8 industries, including logistics, consulting, design, advertisements, IT, HR outsourcing, equipment lease and waste processing. The network provides information to facilitate on-line B2B transaction between corporate customers and suppliers.



CERTIFICATION & MUTUAL AID

Cut Down Cost, Cut Down Efforts

We are the Certification Body for a quality standard (Single PPM) and trade documents. Issuing certificates for those meeting prerequisite conditions for global businesses, we strive to provide more convenient service to our membership base. We also offer mutual aid programs for product liability (PL) at more favorable conditions and affordable pricing.

TRADE DOCUMENTS (<http://cert.korcham.net>)

☒ Certificate Service Team
| 02-6050-3302~7

Import-export transactions need to be backed up by objective and fair documents. Documents with our certification secure international recognition, and we offer the service at no charge to our members.

| | | | |
|---------|------------|--|---|
| Offices | · KCCI | Main Office 02-6050-3302~7 | Gangnam Office 02-528-4881~4 |
| | · Chambers | Seocho-gu 02-6006-6259~62 Seodaemun-gu 02-395-1591~3 Yongdeungpo-gu 02-2676-4871 | Guro-gu 02-855-3095 Dongdaemun-gu 02-2248-7655~6 Nowon-gu 02-976-0523~4 |

QUALITY CERTIFICATION (<http://sppm.korcham.net>)

☒ Single PPM Quality Innovation Center | 02-6050-3853~4

To promote win-win cooperation between big and small businesses, to secure quality competitiveness of parts & assembly industries, we select and reward exemplary companies in quality innovation, promote Single PPM, provide materials, arrange industrial tours for exemplary companies in Korea and abroad, provide quality training in on-line and off-line courses, bring out quality innovation experts, assist SME efforts to establish a quality innovation system and certify Single PPM.

MUTUAL AID FOR PL CLAIMS (<http://pl.korcham.net>)

☒ PL Call Center | 02-6050-3862~3

As Product Liability Law became effective in July 2002, we introduced a mutual aid program as a countermeasure. Our member companies have become beneficiaries of the preferential treatment we offer, at a discount rate of up to 30%. When there is a litigation or claim, members can proceed in more favorable conditions than those offered by private insurance companies.



What You Need

You may be navigating your business in rough waters. In this world of unlimited competition, the sure way to survive is to find a reliable partner who can assess the local situation and help you sincerely. Should the need arise, we will be your teacher, guide, or even a porter.

We will always be there in your journey to Success.

MEMBERSHIP SERVICE CHARTER

KCCI executives and staff strive to provide the best service to its membership. To become the best economic organization and the true partner in achieving business success for its members, KCCI pledges the following:

- ☉ We will place the highest priority in membership trust.
- ☉ We will become a business-leading economic organization with a future-oriented outlook.
- ☉ We will develop specialties in various areas from basic industries to state-of-the-art technologies.
- ☉ We will provide fast and accurate service to suit the digital age.

We are a comprehensive economic organization and a provider of information and services in all aspects of business activities in Korea. With rapid changes going on in the business environment, we represent our membership and the private sector with specialized information and differentiated services. As the sole economic organization with both national and global networks, we empower companies with accumulated experience, professionalism and originality, to present new future value and boost current core value.